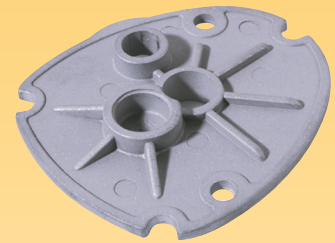
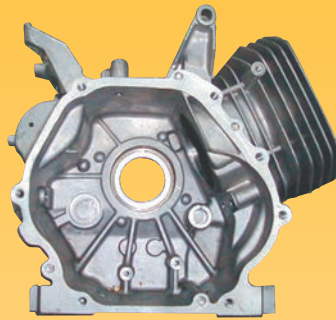




*Beyond control knobs . . . Components and assemblies within your reach.*

# ***Component & Assembly Manufacturing***

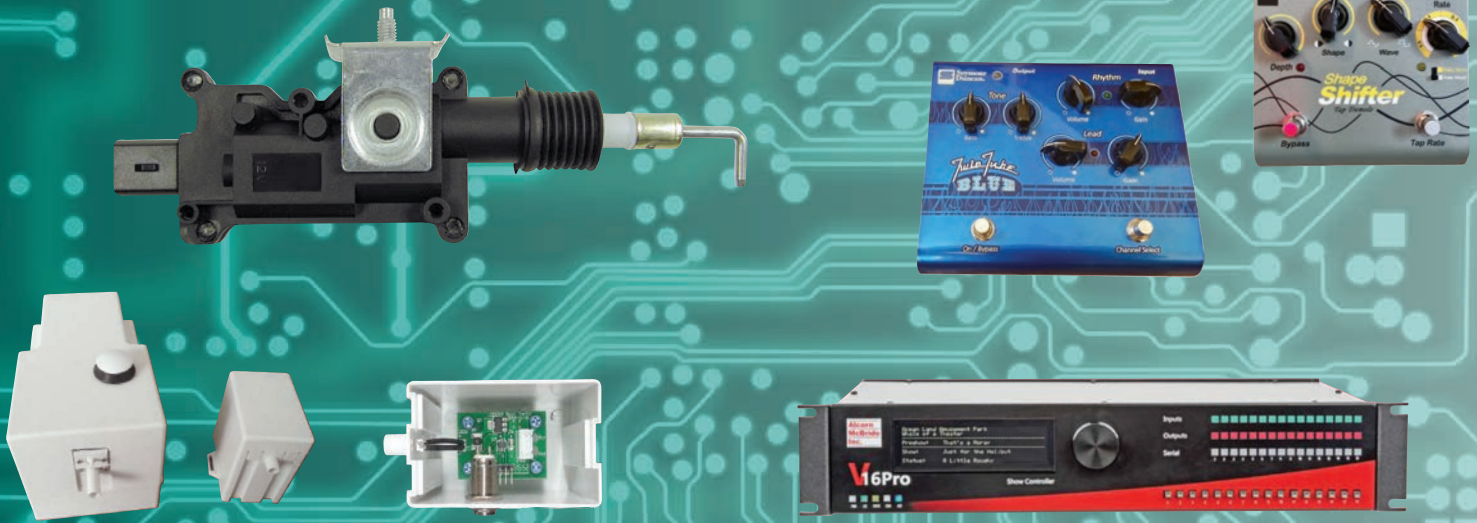


*Injection Molding Die Casting Box-Build Outs Anodizing Commercial and Retail Packaging  
Metals Electronics Hexavalent & Trivalent Plating Thermoforming Pad Printing Secondaries  
CNC Machining Extrusion Sand Casting Board Design/Population Sub-assembly Stamping  
Full-Product Assembly Laser Marking Screw Machining Wire Harnesses Rotational Molding*

# **www.ehcoem.com**

*Your Manufacturing Partner*

# Electrical and Electro-mechanical Assemblies



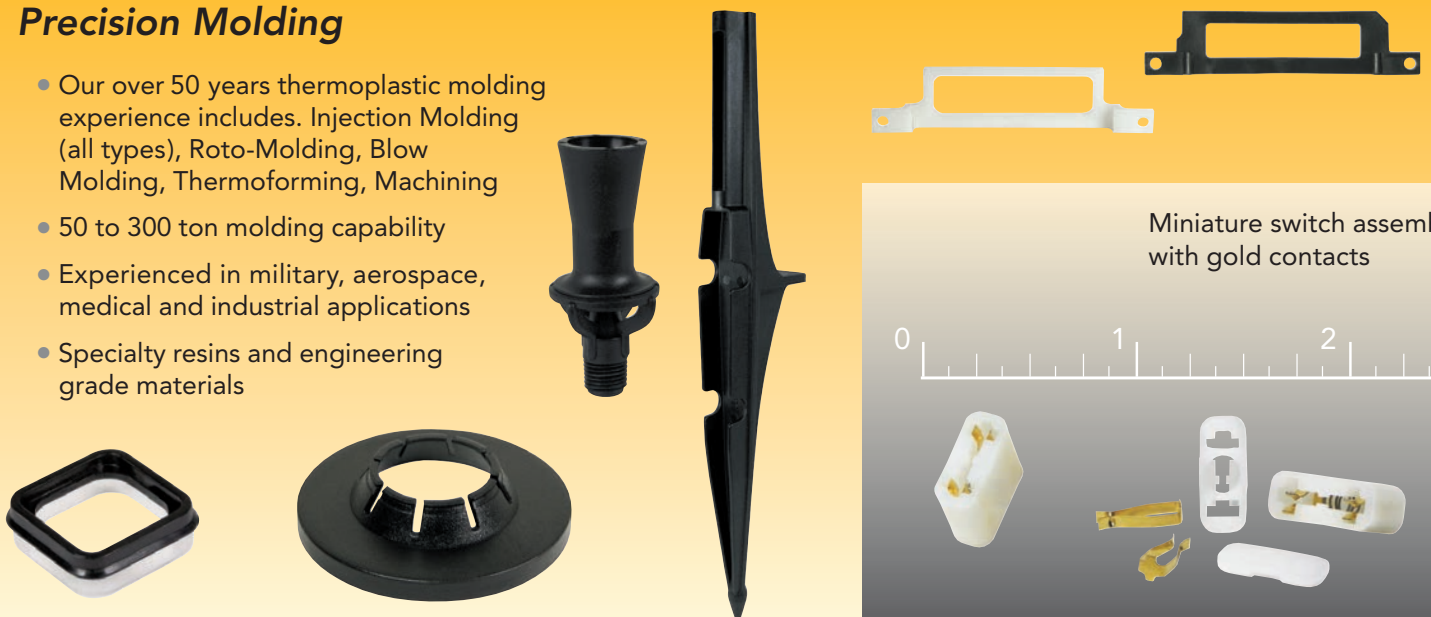
## Metal Stamping, Casting and CNC Machining

- Offer a wide range of alloys including all grades of stainless steel, aluminum, zinc, and other exotic metals
- Close tolerance screw machine work
- Machined close-tolerance assemblies
- Standard tolerances; 0.XX: +/- .02", 0.XXX: +/- 0.010"
- Precision tolerances up to +/- .001"
- Casting, Sand Casting, Deep-drawn Metals and Investment Casting
- Extrusions
- High-quality, durability



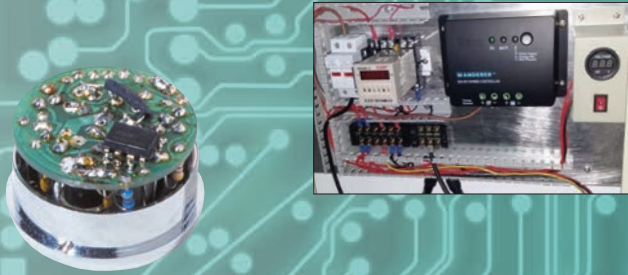
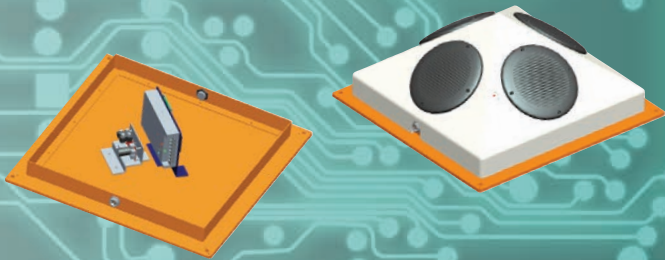
## Precision Molding

- Our over 50 years thermoplastic molding experience includes. Injection Molding (all types), Roto-Molding, Blow Molding, Thermoforming, Machining
- 50 to 300 ton molding capability
- Experienced in military, aerospace, medical and industrial applications
- Specialty resins and engineering grade materials



Miniature switch assembly with gold contacts





We are a full-service electronics contract manufacturer with services that include:

- PCB and PCBA manufacturing
- Electro-mechanical and full box-build assemblies
- Automated surface-mount and through-hole assembly
- Cable and harness manufacturing
- Functional testing

## Components Manufacturing & Assembly

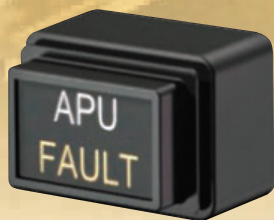
- Sub-assembly
- Full product assembly
- Commercial and retail packaging



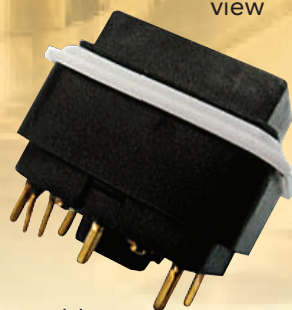
Take advantage of our wide variety of secondary and finishing operations.

## We excel at manufacturing to close-tolerances.

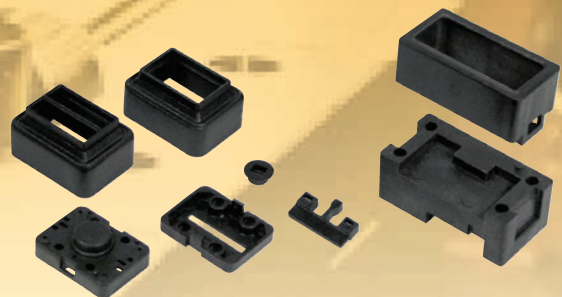
As a premier supplier of molded plastic parts and components for the aerospace, defense, medical and automotive industries for over 50 years, our committed team of engineers and project managers are well-prepared to confidently meet your most challenging demands.



Miniature thin-wall molding assembly



Enlarged view



actual size

## Custom Design

EHC's design and engineering professionals can complement your in-house personnel, or provide a full-service solution for your company's design and engineering needs.

## Engineering Support

Assist with product development, manufacturing and logistics.

## Precision Manufacturing

High quality manufacturing, not limited by size, scale or materials.

## Machining and Finishing Operations

We provide a full compliment of secondary operations and value-added services.

## Subassembly

EHC's light assembly service can help you reduce costs and simplify operations.

## Quality Assurance

Our dedicated team of project managers and engineers intensively inspects operations at every step to ensure an unparalleled level of quality.

ISO9001 certified



## Secondary Operations

- Anodizing
- Pad Printing
- Laser Marking
- Hot Stamping
- Painting
- Decorating
- Silk Screening
- Hot Stamping
- RF Welding
- Plating
- Ultrasonic Welding
- Hexavalent Plating
- Trivalent Plating
- Retail Packaging
- And more



*We provide our customer with a complete turn-key solution from BOM procurement to final inspection and delivery.*